



**PREPARED BY: WEST GODAVARI BIO-SCIENCE GURU**

13. No. of Blood vessels Attached to the heart ( b )  
a) 5                                      b) 6                                      c) 4                                      d) 3
14. Muscles that help in pushing the lymph into lymphatic vessels and Blood into veins towards the heart are ( a )  
1) Skeletal muscle    2) Cardiac Muscle    3) Smooth Muscle  
a) 1 is correct                      b) 1 & 2 Correct                      c) 1,2,3 correct                      d) None
15. The extracted plant juice by aphids contains ( a )  
a) Sugars and amino acids                      b) Water  
c) Minerals                                      d) Water and minerals
16. Which one is used for absorption of water and minerals from soil in to plants ( b )  
a) Capillaries                      b) Root hair                      c) Bark                      d) Xylem
17. Water Evaporates through stomata of leaves and .... Of stem ( c )  
a) Root hair                      b) Aerial Roots                      c) Lenti Cells                      d) Raphids

**Matching**

18. Annelids ( e ) a. 2 chambered heart  
19. Arthropods ( d ) b. 4 Chambered heart  
20. Mammals ( b ) c. Osmosis, Diffusion  
21. Fish ( a ) d. Open circulatory system  
22. Amoeba ( c ) e. Pulsatile Vessel

**One mark Question**

1. What is the reason for the elasticity of the arteries wall. (or)  
Arteries and veins are both transport the blood. Imagine which walls are thicker and way?
- a. The walls of arteries are thick and elastic. When the blood enters with a pressure in to arteries the walls will stretch and this enables the arteries to with stand the increase in the pressure with out bursting.
2. In our body the blood flows always in a single direction which parts are responsible for this. (or)  
What is the function of valves in blood circulatory systems (or)  
If the valves are absent in blood circulatory system what will happen.
- a. Valves are used to flow blood in single direction in blood vessels. If valves are absent the blood flows in reverse also.
3. What are the moments caused for the transport of materials in the protoplasm of amoeba (or) What is meant by Brownian movement

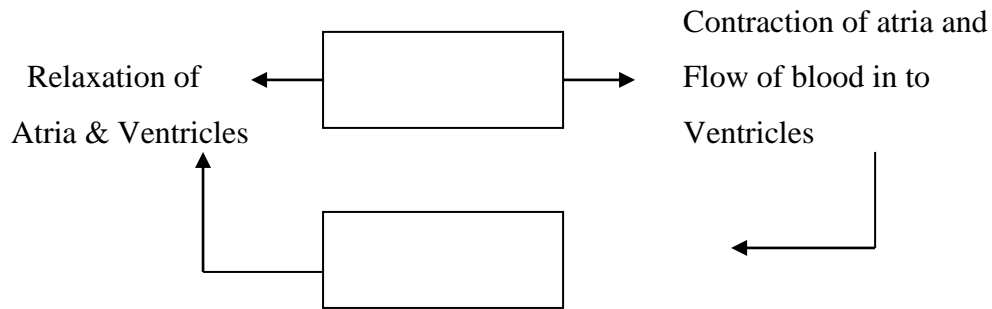
**PREPARED BY: WEST GODAVARI BIO-SCIENCE GURU**

- a. In unicellular organisms like amoeba the protoplasm shows natural movements are called Brownian movements.
4. What is meant by cardiology?
  - a. Study of heart
5. What is meant by Hematology ?
  - a. Study of Blood
6. The fluid that contains blood without solid particles is called ?
  - a. Lymph.
7. Which vitamin is used for clotting of blood?
  - a. Vitamin – K
8. The Blood flows twice through the heart for completing one circulation It is called?
  - a. double circulation.
9. What is meant by gastro vascular cavity ?
  - a. Hydra and Jelly fish have developed blind sac like gastro vascular cavity for digestion and transportation of nutrients.
10. What happen if we remove the bark in some area around the stem?
  - a. If we remove the bark in some area of the stem, then the upper part of the cutting area was swollen. Because the phloem transports food materials to lower parts.
11. What happen if cholesterol is clot around the walls of the arteries?
  - a. It leads to Heart attack.
12. What are the tissues that used for transport of water and food in plants ?
  - a. Xylem – water transport , Phloem : Food transport.

**2 Marks questions**

1. How the water and minerals are transport to the tip of the long trees?
2. Plasma is a medium of blood. How is it differ from blood ?
3. Imagine why our sensitive body parts covered with fluids. Which fluid covers the heart.
4. Is there any relationship between rainfall and transpiration ? (or)  
Generally rain fall is more in forest areas. Is there any relation between forest and rainfall ?
5. In long journeys our legs are swollen .what is the reason behind this ? (or)  
What is edema ? (or)  
What is tissue fluid ?

6. What is meant by cardiac cycle. (or)

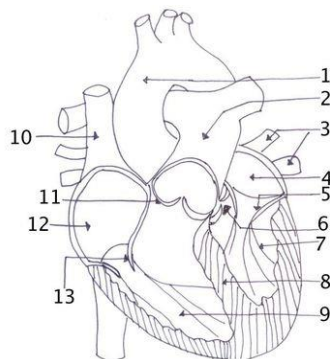


Fill this flow chart.

7. What did you observe while you were doing root pressure experiment ?
8. In India many women and children are suffered with anemia. What are the reasons and for this what precautions do you take ?
9. Platelets → thrombokinase → Prothrombin → thrombin → fibrinogen → fibrin explain this ?
10. Write a short notes on hemophilia
11. Human circulatory system is differ from fish circulatory system. Write the differences between these two systems.
12. Generally B.P is measured from hands. What is the reason behind this.
13. If you get a chance to meet a cardiologist, what Questions you will ask about the functions of heart.
14. Why did the lower part of heart wall is thicker than upper part of the wall. Give reasons.

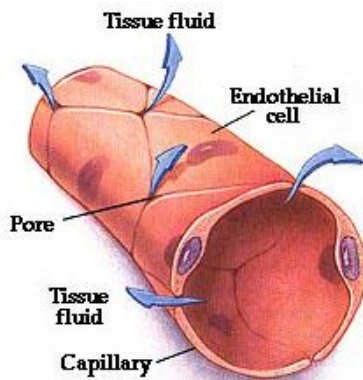
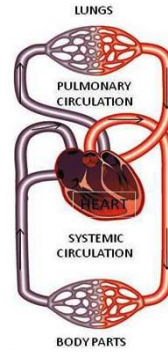
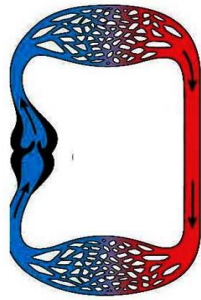
#### 4 Marks Questions

1. What are the observations that you identified wile doing aphids experiment
2. How can you prove that the water transport through the xylem.
3. Write about the internal structure of heart ?



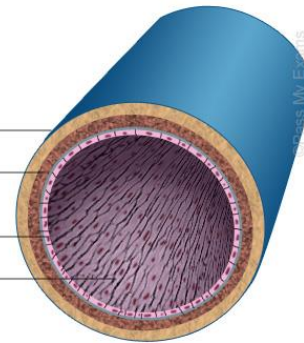
parts identification diagram.

4. Identifying these diagrams.



Cross-Section

- Thin Outer Wall
- Thin inner layer of muscle and elastic fibres
- Endothelium
- Large central Lumen through which blood flows



5. After learning about circulatory system. What measures would you take to control your B.P.